



Bear Estate Agents are delighted to present with NO ONWARD CHAIN this deceptively spacious three-bedroom mid-terraced house, ideally positioned in the heart of Basildon. Nestled within the ever-popular Chichester Close, this home offers convenient access to a range of local amenities, including shops, schools, and excellent transport links. Basildon Railway Station is just a short drive away, providing a direct and reliable C2C service into London Fenchurch Street — perfect for commuters. For those who prefer to drive, both the A13 and A127 are easily accessible, ensuring superb connections into London and surrounding areas.

- NO ONWARD CHAIN
- Kitchen (12'11 x 7'11)
- Bedroom 1 (12'8 x 10'6)
- Bedroom 3 (9'6 x 8'1)
- Potential for a downstairs W/C
- Lounge/Diner (12'8 x 18'10)
- Utility Room (6'2 x 6'4)
- Bedroom 2 (15'6 x 8'1)
- Three-Piece Bathroom Suite (6'2 x 10'6)
- Large Communal Car Park to the Front

## Chichester Close

Basildon

**£300,000**





# Chichester Close



Internally, the new owner will be welcomed into a spacious lounge/diner measuring 12'8" x 18'10". This bright and airy room benefits from two large front-facing windows that flood the space with natural light throughout the day, creating an ideal setting for relaxing or entertaining guests.

The kitchen is a fantastic size at 12'11" x 7'11", offering an abundance of both worktop and cupboard space — perfect for any home cook.

Across from the kitchen sits the utility room, measuring 6'2" x 6'4". This area was previously a downstairs W/C, and with the original plumbing still in place (currently capped off), reinstating a cloakroom would be a simple project for the new owner.

Moving upstairs, the first floor begins with Bedroom 1, a generously sized 12'8" x 10'6" room easily accommodating a double bed and wardrobes while still providing ample floor space.

Bedroom 2 measures 15'6" x 8'1" and comfortably fits a double bed and storage, while Bedroom 3, at 9'6" x 8'1", makes for a perfect child's room, guest room, or home office.

Completing the first floor is the three-piece family bathroom, which includes a shower-over-bath, toilet, and sink, along with a large airing cupboard for additional storage.

Externally, the property features a low-maintenance rear garden with rear access, while to the front there is a large communal car park providing ample parking for residents and visitors alike.

Council Tax Band: B (£1670.13)

AML Checks - All buyers interested in purchasing a property through us are required to complete an Anti-Money Laundering (AML) check. A non-refundable fee of £30 + VAT per buyer in the transaction will apply. This fee must be paid before proceeding with the purchase.

## **NO ONWARD CHAIN**

**Lounge/Diner (12'8 x 18'10)**

**Kitchen (12'11 x 7'11)**

**Utility Room (6'2 x 6'4)**

**Bedroom 1 (12'8 x 10'6)**

**Bedroom 2 (15'6 x 8'1)**

**Bedroom 3 (9'6 x 8'1)**

**Three-Piece Bathroom Suite (6'2 x 10'6)**

**Potential for a downstairs W/C**

**Large Communal Car Park to the Front**

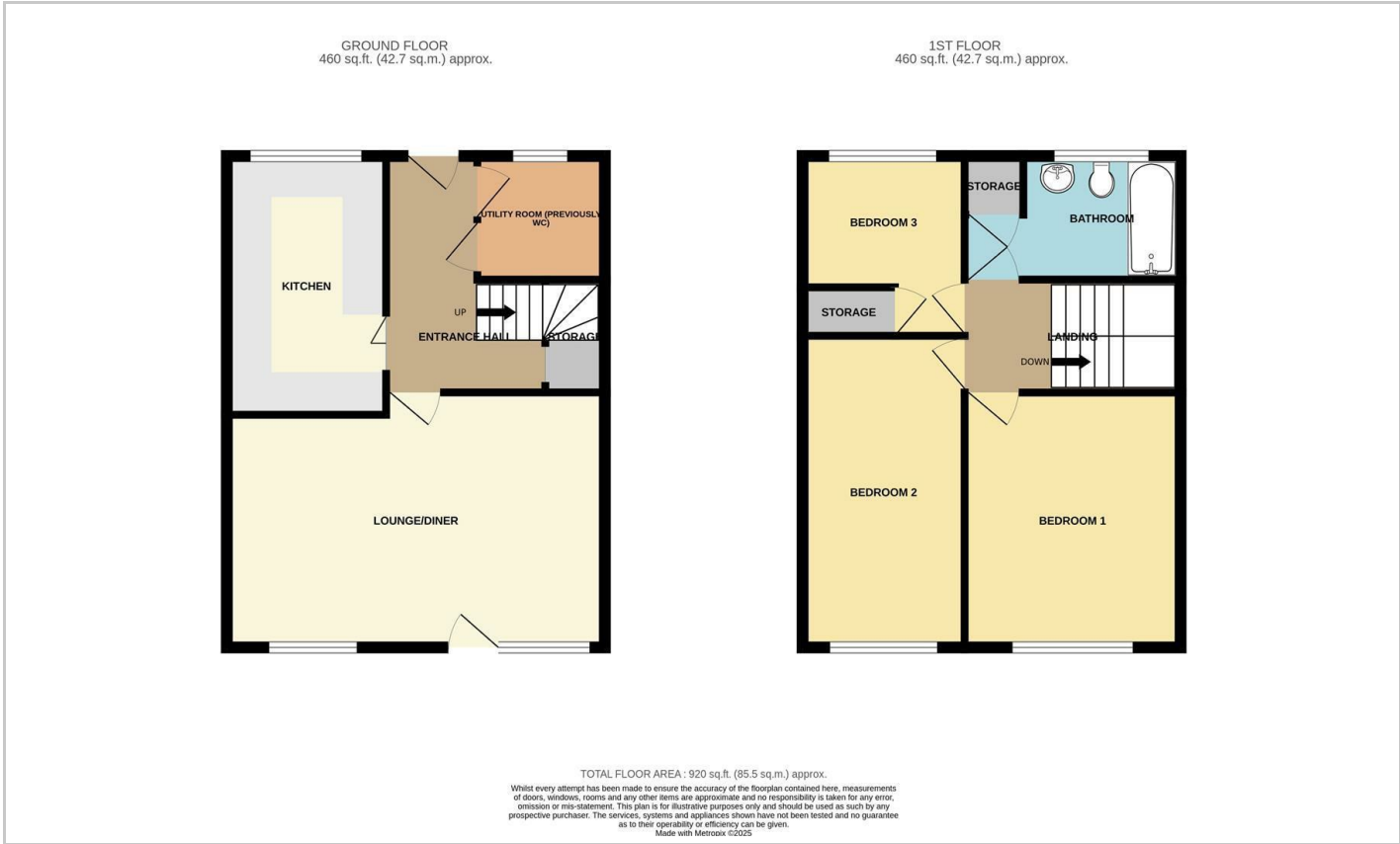
**Low Maintenance Rear Garden**



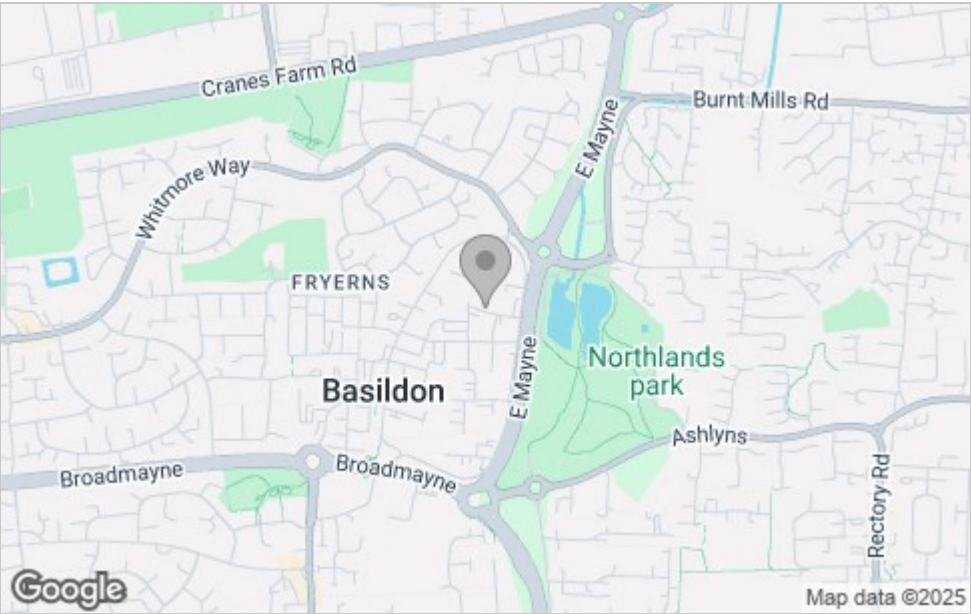




Floor Plan



Area Map



Viewing

Please contact our Basildon Office on 01268 661215 if you wish to arrange a viewing appointment for this property or require further information.

These particulars, whilst believed to be accurate are set out as a general outline only for guidance and do not constitute any part of an offer or contract. Intending purchasers should not rely on them as statements of representation of fact, but must satisfy themselves by inspection or otherwise as to their accuracy. No person in this firms employment has the authority to make or give any representation or warranty in respect of the property.

351 Clay Hill Road, Basildon, Essex, SS16 4HA

Office: 01268 661215 [basildon@bearestateagents.co.uk](mailto:basildon@bearestateagents.co.uk) <http://www.bearestateagents.co.uk/>

Energy Efficiency Graph

